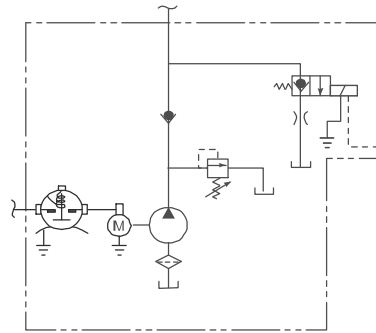


3.18 Model M-719

Description

- Pump / Motor / Reservoir / Valve
- Check Valve
- 2-Way/2-Position Normally Closed Solenoid Operated Lowering Valve
- Externally Adjustable Relief Valve
- .375 Inch NPT Outlet
- Fixed Orifice in Lowering Circuit. Externally Cleanable
- Vertical Mounting
- Includes Protective Steel Cover

Schematic

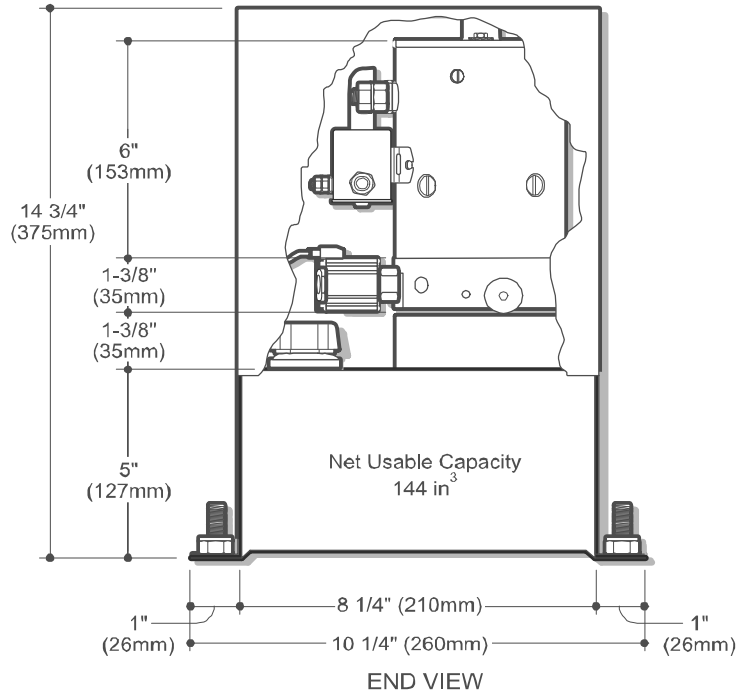
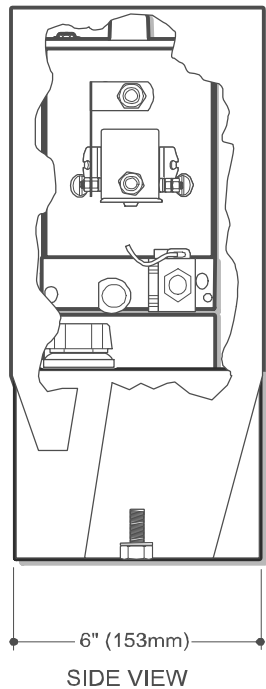


Popular Options

- Control Box and Cord

Typical Application:

- Control Discharge Chute on Cement Delivery Truck



How to Order Your M-719

Comprehensive information may be found on the page referenced below each selection category.

Shown as standard with:

Pump	Motor	Voltage	Reservoir (Length)	Mounting Position	Accessories
12171-270	08111	12	06385	Horizontal	04560
Ref. Page	Ref. Page 52		Ref. Page 76-86		Ref. Page 92