


Product Change Notification PCN_MOBILE_2106_010

PCN Identification Data

	Lenze Service GmbH Breslauer Strasse 3 D-32699 Extertal	on behalf of	Schmidhauser AG Obere Neustrasse 1 CH-8590 Romanshorn
Notification No.	PCN_MOBILE_2106_010		
Type of Notification	<input checked="" type="checkbox"/> PCN (Product Change Notification) <input type="checkbox"/> PTN (Product Termination Notification)		
Product Category	MOBILE DCU MOBILE PSU MOBILE DCU PSU MOBILE DCU S		
Type of Change	<input checked="" type="checkbox"/> Hardware <input type="checkbox"/> Software <input type="checkbox"/> Process <input checked="" type="checkbox"/> Documentation		
Supplier Contact	Lenze Schmidhauser - Mobile Helpline cpe-mobile@lenze-schmidhauser.ch		

Revision History		
Rev. 00	14.06.2021	Initial Revision

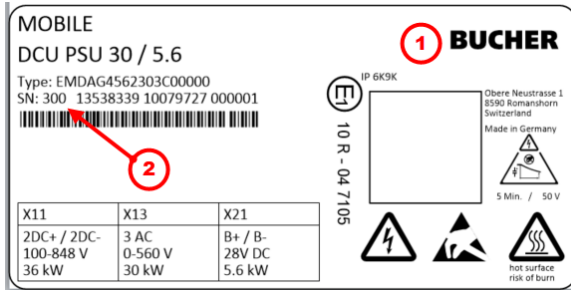
Table of Contents

1 Description of Changes	2
2 Timing / Schedule	4
3 Qualification / Validation	4
4 Input to Customer for Risk Assessment Process	4
5 Attachments / additional Documentation	4
6 Affected Parts	5

1 Description of Changes

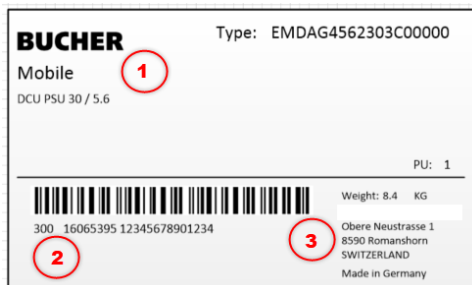
ID Informationen an Kunden

NAWR_HW-9280 Adaptation of the MOBILE nameplate and the MOBILE packaging label



The MOBILE nameplate was adapted with the new company owner logo "Bucher" (1).

Furthermore, the MOBILE serial number was preceded by a manufacturer-specific number "300" (2). This number is not part of the MOBILE serial number and is not coded in the barcode.



The MOBILE packaging label has been adapted with the new company owner logo "Bucher" (1) and the company address (3) has also been updated.

Furthermore, the MOBILE serial number was preceded by a manufacturer-specific number "300" (2). This number is not part of the MOBILE serial number and is not coded in the barcode.

No other changes were made to the MOBILE products. All production processes have not been changed and remain at Lenze Operation.

NAWR_HW-9281 Adaptation of the MOBILE documentation

The MOBILE documentation has been adapted with the new company owner logo "Bucher Hydraulics" and the new company address has been updated.

BUCHER

hydraulics

MOBILE documentation can be downloaded from the website www.bucherdrives.com.

NAWR_HW-9295 The QR code on the X31 protective cap has been removed.

Applies only to the following devices:

MOBILE DCU (EMDxG2xxxxxxxx010)

MOBILE PSU (EMDxG3xxxxxxxx010)

MOBILE DCU PSU (EMDxG4xxxxxxxx010)

NAWR_HW-9296 The supplemental sheet for the new X31 pin assignment of the MOBILE HW V010 is no longer supplied.

Applies only to the following devices:

MOBILE DCU (EMDxG2xxxxxxxx010)

MOBILE PSU (EMDxG3xxxxxxxx010)

MOBILE DCU PSU (EMDxG4xxxxxxxx010)

NAWR_HW-9298

The service address for the MOBILE devices has changed. All MOBILE returns must be sent to the following address from 01. July 2021 onwards:

Bucher Hydraulics AG
Industriestrasse 15
CH-6345 Neuheim
Switzerland

5 items found 

2 Timing / Schedule

Implementation of the change	01.07.2021
Availability of Samples (prototypes)	n.a.
Start of Delivery (production line)	01.07.2021
PTN of previous product (M10)	n.a.
Customer forecast for MOBILE inverters delivery until last order call	n.a.
Last order call previous product (M11)	n.a.
Last order call repair units previous product (M13)	n.a.
Product Discontinued (M14)	n.a.

3 Qualification / Validation

Qualification Report	n.a.
----------------------	------

4 Input to Customer for Risk Assessment Process

Form	No change of outline dimensions.
Fit	No change of outline dimensions.
Function	No change of outline dimensions.
EMI	No change of EMI relevant components or layout.
Backward Compatibility	The new units are backward compatible with existing units.

5 Attachments / additional Documentation

Additional Documentation	New 2D and 3D-pdf files are available on request (see supplier contact above)
Hardware Manual	"MOBILE Hardware Manual" downloadable from www.bucherdrives.com (available from 01.07.2021)
Mounting Instructions	"MOBILE Mounting Instructions" downloadable from www.bucherdrives.com (available from 01.07.2021)
SW Reference Manual	"MOBILE Software Manual" downloadable from www.bucherdrives.com (available from 01.07.2021)

6 Affected Parts

#		Previous device	New device
1	Customer Part No. Supplier Part Name Supplier Type designation	MOBILE DCU 15 / 7.5 000 EMDAG2153752U00000	MOBILE DCU 15 / 7.5 000 EMDAG2153752U00000
2	Customer Part No. Supplier Part Name Supplier Type designation	MOBILE DCU 15 / 7.5 010 EMDAG2153752U00010	MOBILE DCU 15 / 7.5 010 EMDAG2153752U00010
3	Customer Part No. Supplier Part Name Supplier Type designation	MOBILE DCU 30 / 15 000 EMDAG2303153U00000	MOBILE DCU 30 / 15 000 EMDAG2303153U00000
4	Customer Part No. Supplier Part Name Supplier Type designation	MOBILE DCU 30 / 15 010 EMDAG2303153U00010	MOBILE DCU 30 / 15 010 EMDAG2303153U00010
5	Customer Part No. Supplier Part Name Supplier Type designation	MOBILE DCU 30 / 30 000 EMDAG2303303U00000	MOBILE DCU 30 / 30 000 EMDAG2303303U00000
6	Customer Part No. Supplier Part Name Supplier Type designation	MOBILE DCU 30 / 30 010 EMDAG2303303U00010	MOBILE DCU 30 / 30 010 EMDAG2303303U00010
7	Customer Part No. Supplier Part Name Supplier Type designation	MOBILE DCU 30 / 30 Dual-Use 000 EMDAG2303303U0J900	MOBILE DCU 30 / 30 Dual-Use 000 EMDAG2303303U0J900
8	Customer Part No. Supplier Part Name Supplier Type designation	MOBILE DCU 30 / 30 Dual-Use 010 EMDAG2303303U0J910	MOBILE DCU 30 / 30 Dual-Use 010 EMDAG2303303U0J910
9	Customer Part No. Supplier Part Name Supplier Type designation	MOBILE DCU 60 / 60 000 EMDAG2603603U00000	MOBILE DCU 60 / 60 000 EMDAG2603603U00000
10	Customer Part No. Supplier Part Name Supplier Type designation	MOBILE DCU 60 / 60 010 EMDAG2603603U00010	MOBILE DCU 60 / 60 010 EMDAG2603603U00010
11	Customer Part No. Supplier Part Name Supplier Type designation	MOBILE DCU 60 / 60 Dual-Use 000 EMDAG2603603U0J900	MOBILE DCU 60 / 60 Dual-Use 000 EMDAG2603603U0J900
12	Customer Part No. Supplier Part Name Supplier Type designation	MOBILE DCU 60 / 60 Dual-Use 010 EMDAG2603603U0J910	MOBILE DCU 60 / 60 Dual-Use 010 EMDAG2603603U0J910
13	Customer Part No. Supplier Part Name Supplier Type designation	MOBILE PSU 2.8 (400 V) 000 EMDAG3282000P00000	MOBILE PSU 2.8 (400 V) 000 EMDAG3282000P00000
14	Customer Part No. Supplier Part Name Supplier Type designation	MOBILE PSU 2.8 000 EMDAG3282000T00000	MOBILE PSU 2.8 000 EMDAG3282000T00000
15	Customer Part No. Supplier Part Name Supplier Type designation	MOBILE PSU 2.8 010 EMDAG3282000T00010	MOBILE PSU 2.8 010 EMDAG3282000T00010
16	Customer Part No.		

	Supplier Part Name Supplier Type designation	MOBILE PSU 5.6 000 EMDAG3562000C00000	MOBILE PSU 5.6 000 EMDAG3562000C00000
17	Customer Part No. Supplier Part Name Supplier Type designation	MOBILE PSU 5.6 010 EMDAG3562000C00010	MOBILE PSU 5.6 010 EMDAG3562000C00010
18	Customer Part No. Supplier Part Name Supplier Type designation	MOBILE PSU 5.6 (400 V) 000 EMDAG3562000S00000	MOBILE PSU 5.6 (400 V) 000 EMDAG3562000S00000
19	Customer Part No. Supplier Part Name Supplier Type designation	MOBILE DCU PSU 15 / 2.8 (400 V) 000 EMDAG4282153P00000	MOBILE DCU PSU 15 / 2.8 (400 V) 000 EMDAG4282153P00000
20	Customer Part No. Supplier Part Name Supplier Type designation	MOBILE DCU PSU 15 / 2.8 000 EMDAG4282153T00000	MOBILE DCU PSU 15 / 2.8 000 EMDAG4282153T00000
21	Customer Part No. Supplier Part Name Supplier Type designation	MOBILE DCU PSU 15 / 2.8 010 EMDAG4282153T00010	MOBILE DCU PSU 15 / 2.8 010 EMDAG4282153T00010
22	Customer Part No. Supplier Part Name Supplier Type designation	MOBILE DCU PSU 30 / 2.8 (400 V) 000 EMDAG4282303P00000	MOBILE DCU PSU 30 / 2.8 (400 V) 000 EMDAG4282303P00000
23	Customer Part No. Supplier Part Name Supplier Type designation	MOBILE DCU PSU 30 / 2.8 000 EMDAG4282303T00000	MOBILE DCU PSU 30 / 2.8 000 EMDAG4282303T00000
24	Customer Part No. Supplier Part Name Supplier Type designation	MOBILE DCU PSU 30 / 2.8 010 EMDAG4282303T00010	MOBILE DCU PSU 30 / 2.8 010 EMDAG4282303T00010
25	Customer Part No. Supplier Part Name Supplier Type designation	MOBILE DCU PSU 60 / 2.8 000 EMDAG4282603T00000	MOBILE DCU PSU 60 / 2.8 000 EMDAG4282603T00000
26	Customer Part No. Supplier Part Name Supplier Type designation	MOBILE DCU PSU 60 / 2.8 010 EMDAG4282603T00010	MOBILE DCU PSU 60 / 2.8 010 EMDAG4282603T00010
27	Customer Part No. Supplier Part Name Supplier Type designation	MOBILE DCU PSU 15 / 5.6 000 EMDAG4562153C00000	MOBILE DCU PSU 15 / 5.6 000 EMDAG4562153C00000
28	Customer Part No. Supplier Part Name Supplier Type designation	MOBILE DCU PSU 15 / 5.6 010 EMDAG4562153C00010	MOBILE DCU PSU 15 / 5.6 010 EMDAG4562153C00010
29	Customer Part No. Supplier Part Name Supplier Type designation	MOBILE DCU PSU 15 / 5.6 (400 V) EMDAG4562153S00000	MOBILE DCU PSU 15 / 5.6 (400 V) EMDAG4562153S00000
30	Customer Part No. Supplier Part Name Supplier Type designation	MOBILE DCU PSU 30 / 5.6 000 EMDAG4562303C00000	MOBILE DCU PSU 30 / 5.6 000 EMDAG4562303C00000
31	Customer Part No. Supplier Part Name Supplier Type designation	MOBILE DCU PSU 30 / 5.6 010 EMDAG4562303C00010	MOBILE DCU PSU 30 / 5.6 010 EMDAG4562303C00010
32	Customer Part No. Supplier Part Name Supplier Type designation	MOBILE DCU PSU 30 / 5.6 (400 V) 000 EMDAG4562303S00000	MOBILE DCU PSU 30 / 5.6 (400 V) 000 EMDAG4562303S00000
33	Customer Part No.		

	Supplier Part Name Supplier Type designation	MOBILE DCU PSU 60 / 5.6 000 EMDAG4562603C00000	MOBILE DCU PSU 60 / 5.6 000 EMDAG4562603C00000
34	Customer Part No. Supplier Part Name Supplier Type designation	MOBILE DCU PSU 60 / 5.6 010 EMDAG4562603C00010	MOBILE DCU PSU 60 / 5.6 010 EMDAG4562603C00010
35	Customer Part No. Supplier Part Name Supplier Type designation	MOBILE DCU S 11 EMDAG5113000U00000	MOBILE DCU S 11 EMDAG5113000U00000
36	Customer Part No. Supplier Part Name Supplier Type designation	MOBILE DCU S 22 EMDAG5223000U00000	MOBILE DCU S 22 EMDAG5223000U00000