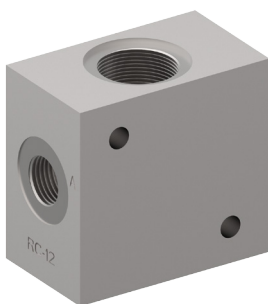


# Valve accessory

## Threaded port body

---

Type series: RC-12



- For cavity RC
- All external parts with zinc-nickel coating according to DIN EN ISO 19598
- Functionless threaded port body
- Port sizes of the main connections G 1/2"
- Optimized  $\Delta p$  values
- Suitable for piping assembly
- Can be fixed with 2x cap screws

### Technical data

General Characteristics	Description, value, unit
Function group	Valve accessory
Function	Threaded port body
Maximum operating pressure	350 bar
Weight	2.20 kg
Cavity acc. factory standard	For cavity RC
Surface protection	All external parts with zinc-nickel coating according to DIN EN ISO 19598

Dimensions and sectional view

