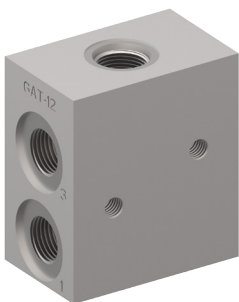


Valve accessory

Threaded port body

Type series: GAT-12-...

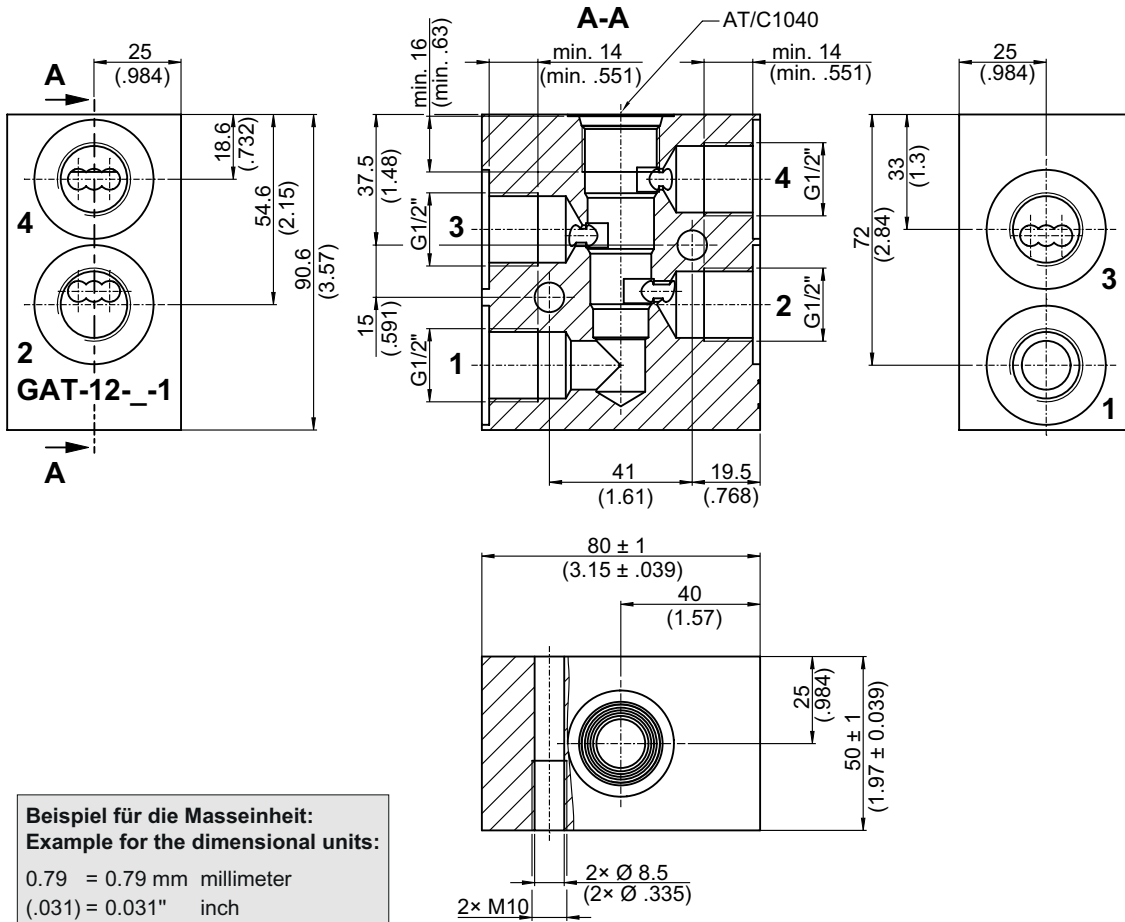


- For cavity AT/C1040
- All external parts with zinc-nickel coating according to DIN EN ISO 19598
- Functionless threaded port body
- Port sizes of the main connections G 1/2"
- Optimized Δp values
- Suitable for piping assembly
- Can be fixed with 2× cap screws

Technical data

General Characteristics	Description, value, unit
Function group	Valve accessory
Function	Threaded port body
Maximum operating pressure	420 bar
Weight	2.3 kg
Cavity acc. factory standard	For cavity AT/C1040
Surface protection	All external parts with zinc-nickel coating according to DIN EN ISO 19598

Dimensions and sectional view



Beispiel für die Masseinheit:
Example for the dimensional units:
 0.79 = 0.79 mm millimeter
 (.031) = 0.031" inch

Ordering code

Ex. **GAT** - **12** - **S** - **1**

- GAT = threaded port body for cavity AT/C1040
- 12 = connection size of the main ports G 1/2"
- S = material design steel (*standard*)
- A = material design aluminium with limited performance data (*on request*)
- 1...9 = technical design no. (omit when ordering)