

3.23 Model M-4528

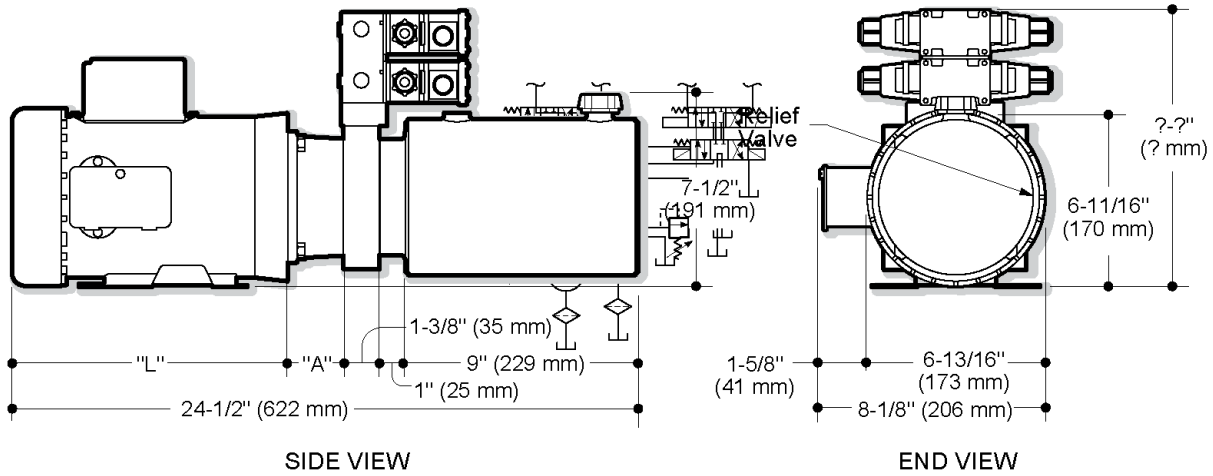
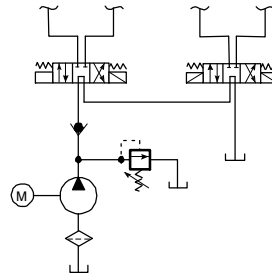
Description

- Pump/Motor/Reservoir/Valve Unit
- Check Valve in "P" Port
- Externally Adjustable Relief Valve
- (2) D03 Double Solenoid Valves
- #6 SAE Outlets
- 250 Inch NPT Outlets

Popular Features

- Vertical Mounting, Motor Up
- Large Selection of D03/CETOP Valves and Accessories
- Parallel Circuit Available

Schematic



"L" dimension shown for 08751 motor is 10-11/16" (271 mm)
 "A" dimension for standard 01605 adapter is 2-5/32" (55 mm)
 "A" dimension for optional 01615 adapter is 3-11/32" (85 mm)
 Dimensions will vary according to motor output and manufacturer

How to Order Your M-4528 Power System

Comprehensive information may be found on the page referenced below each selection category.

Pump	Motor	Adapter	Reservoir (Length)	Mounting Position	Accessories
Ref. Page 9	Ref. Page 10	Ref. Page 11	Ref. Page 13		Ref. Page 20